

# International **HOSPITAL** Equipment & Solutions

Volume 34 Issue  
IHE February-March 2010

Weekly news updates at  
[www.ihe-online.com](http://www.ihe-online.com)

## MEDICAL IMAGING SPECIAL 3D displays

Also in this issue:

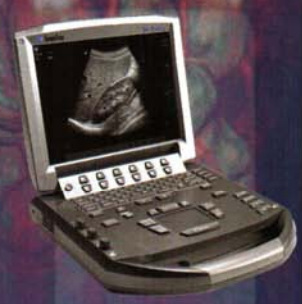
- Anti-microbial catheters in high-risk patients
- Interventional endoscopy
- Breast density in city-dwelling women



Volumetric infusion pumps - Page 17



Blood- and fluid-warming system - Page 32



Hand-carried ultrasound scanner - Page 30

## Smoke evacuator for laparoscopic procedures



(ULPA filter). The integrated turbo purge valve enables rapid evacuation of excessive smoke.

### BUFFALO FILTER

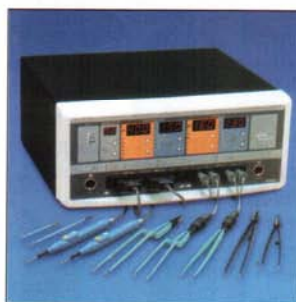
Buffalo, NY, USA

[www.ihe-online.com](http://www.ihe-online.com) & search #P44728#

## Electrosurgical units

Designed for single use, the CapEvac is a small, battery-operated device that attaches to any standard trocar, creating a constant closed loop to filter and recirculate gas within the neumo-peritoneal cavity. The self-contained unit runs quietly throughout the surgical procedure and offers a very high filtration efficiency of 99.999 %

The Excell NHP series of electrosurgical units comprises three models that can be connected to an independent Argon gas module and two additional models with integrated Argon gas functions for electrosurgical cut and coagulation. A total of 100 application programmes can be selected, including pre-set protocols for general and laparoscopic surgery, endoscopic



surgery or using a simple bipolar mode. The electrosurgical units offer ten currents for monopolar use and seven currents for bipolar usage. All the output currents are automatically controlled through a microprocessor that adjusts the power and voltage and checks the starting pulse of the 'cut' currents to ensure a maximum efficacy at the lowest appropriate power setting. All models are equipped with two monopolar outputs, which can be used concurrently by two operators, as well as two bipolar outputs, which are routinely utilised today and are particularly useful for laparoscopic applications. For maximum safety and reliable performance, the units are equipped with a comprehensive series of auto-check systems. Automatically activated aspirators ensure the efficient elimination of smoke and electrosurgical aerosols. A new software package enables on-site calibration and software upgrade through a simple serial port connected to a PC.

### ALSA APPARECCHI MEDICALI

Castel Maggiore, Italy

[www.ihe-online.com](http://www.ihe-online.com) & search #P44731

for modern day treatment centres. New features and enhancements include an increased weight capacity up to 250 kilos, improved control functions and automatic charging. A special ophthalmology head support is also available as an accessory.

### ANETIC AID

Guiseley, UK

[www.ihe-online.com](http://www.ihe-online.com) & search #P44738#

## Surgical LED lamp



OT-StarLED, a new medical lighting system for the operating room (OR), is designed to provide optimal illumination conditions for every type of surgery. By using advanced LED technology, it has been possible to develop an IR-free light, thus decreasing the heat generated around the operator's head and in the surgical area. The surgical lamp incorporates an innovative system to adjust and regulate the illumination levels according to different applications. With a total of 70 LEDs, the lighting system generates a light spot from 21 cm to 100 cm with a high illumination level of 160,000 lux and a steady life cycle of 50,000 hours. An automatic Brightness Adaptor reduces the LED light intensity that is temporarily darkened by an obstruction (e.g. the surgeon's head, hands, etc.). Shadows generated by darkened areas are immediately diluted and compensated by the beams in the illuminated areas producing a homogeneous, shadowless light. This surgical LED lamp is provided with a standard video camera that can be positioned in the centre of the light head or on a separate arm.

### ACEM SPA

Bologna, Italy

[www.ihe-online.com](http://www.ihe-online.com) & search #P44721#

**GOLDWAY**

**UT4000A**  
Multi-parameter Patient Monitor

**UT6000A**  
Multi-parameter Patient Monitor

**G3**  
Handheld Oximeter

**UT6000F**  
Multi-parameter Patient Monitor

**UT4000Fpro**  
Multi-parameter Patient Monitor

**UT4000F**  
Multi-parameter Patient Monitor

**G40**  
Multi-parameter Patient Monitor

**SLC-2000**  
Digital Video Chiropractor

**UT3000**  
Maternal/Fetal Monitor

12<sup>th</sup> SE-Asian Healthcare Show  
March 12-14, 2008  
Stand A-69

CMEF Spring 2008  
April 18-21, 2008  
Stand H2-E28

**GOLDWAY**

SHENZHEN GOLDWAY INDUSTRIAL INC.  
A02-Goldway Bldg., Langshan 3rd Road, Hi-Tech Industrial Park,  
Nanshan District, Shenzhen, P.R. China  
Tel: 86-755-26962999, 26240706 Fax: 86-755-26962722, 24811593  
Email: shenzhen@goldwayinc.com, 66gama@163.net  
www.goldwayhealthcare.com

GOLDWAYUS, INC.  
4602 732 Smithtown Express, Suite 102B Smithtown, NY 11787, USA  
Tel: 831-584-6688 Fax: 831-584-6699  
Email: info@goldwayus.com  
www.goldwayus.com

[www.ihe-online.com](http://www.ihe-online.com) & search #A44700#

## Patient Trolley

Designed to be both a patient transport trolley and an operating table, the QA4 offers a total solution

